

# Traveling Players

## Traveling Players Alumnus Performs in *Hamilton* National Tour

**Tysons, VA**— Traveling Players alumni Kai Thomani Tshikosi has joined the National Tour of *Hamilton*, playing the roles of Hercules Mulligan and James Madison.



*Tshikosi (right) backstage during 'Hamilton'*

A lifelong performer, Tshikosi was a student performer at Traveling Players Ensemble from 2006 - 2012, where he went on his first-ever performance tours as an actor. He spent three years as a member of the Shakespeare Troupe, an advanced audition-based summer conservatory where high school students take a full-length Shakespearean play on a pre-professional tour to theatres all over the region. As a member of Shakespeare Troupe, he played Macbeth (*Macbeth*), Leontes (*The Winter's Tale*), and Biron (*Love's Labor's Lost*), and performed at more than a dozen theatres, including the Kimball Theatre in Williamsburg and Lime Kiln Amphitheatre. He concluded his education at Traveling Players with a performance of *Othello*, in which he played the title role.

Said Tshikosi about his time at Traveling Players,

*"Traveling Players is probably more singularly responsible for my artistic and social development than any other space I was able to grow in as a child. It incubated and deepened my love of text and poetry, taught me the meaning of ensemble, instilled in me the values of rigor and teamwork. It introduced me to friends who more than a decade on are still several of the closest people to my heart. Most importantly, it was the place I felt most safe, most able to be myself and to grow into who I was becoming."*

# Traveling Players



*Tshikosi (right) in Traveling Players' 2009 production of 'Macbeth'*

Tshikosi continued his education at Emerson College in Boston, MA. He graduated in 2015 with a BA in Acting and a concentration in Global/Post-colonial studies. He then furthered his education as a graduate student at Brown University, where he earned his MFA in Acting in 2023. At Brown, Tshikosi performed in various plays and worked as a director, educator, and fight and intimacy choreographer.

Tshikosi has been a working actor in various productions along the Northeast coast. Some recent credits include *Pirelli* (*Sweeney Todd*) at Trinity Repertory Company, *Tybalt* (*Romeo & Juliet*) at Commonwealth Shakespeare Company, and *Oberon* (*Midsummer Night's Dream*) at Shakespeare & Company.

Currently, Tshikosi is in Angelica cast of the [Hamilton](#) National Tour, performing the roles of Hercules Mulligan and James Madison for the duration of the tour. Future *Hamilton* tour locations include: Charlotte, NC; Greenville, SC; Memphis, TN; Houston, TX; Austin, TX; New Orleans, LA; Chattanooga, TN; Omaha, NE; East Lansing, MI; Des Moines, IA; Cleveland, OH; Columbus, OH; Grand Rapids, MI; Ottawa, ON.

You can find more information about his credits and contact Tshikosi on his [website](#).



*Tshikosi with Traveling Players' Founder, Jeanne E. Harrison, on the set of 'Hamilton'*



## **Traveling Players Alumna to appear in West End's *MJ the Musical***

**Tysons, VA**– Traveling Players alumna Jenay Naima has joined the ensemble of the West End's production of *MJ the Musical* as a Swing & Cover for Kate/Katherine and Rachel.



*Headshot of Naima courtesy of the 'MJ The Musical' West End cast announcement.*

Naima began her Traveling Players journey as a student performer in the Thespian Ensemble, a by-audition summer program for middle school actors, in 2006. A life-long Traveling Player, she returned as an Assistant Director for a production of *Hamlet* in 2015, which was performed by Traveling Players' teen company. When the pandemic shut down the National Tour of *The Color Purple* where she was understudying the roles of Celine and Shug Avery, she again returned to Traveling Players and spent a year working as a Voice Teacher & Assistant Director for Traveling Players' advanced teen ensembles on four projects: *Cymbeline* (2020), *Dust* by Sarah Daniels (2020), *Taming of the Shrew* (2021), and *Antigone* translated by Jean Anouilh (2021). Drawing from her experience as a working professional actor, she instilled a sense of professionalism and dedication in her students. Beloved by her students, Naima was known for her warmth, playfulness, and positivity.

Said Naima about her time on faculty at Traveling Players, “Everything I teach at Traveling Players is rooted in the skills I've built as a professional actor. Professionals must demonstrate a willingness to play and get comfortable looking ‘silly’ in front of others, especially in the audition and rehearsal process. That explorative sense and curiosity is a large of part of what makes a rehearsal process productive.”



*Naima as Tinker Bell in 'The New Adventures of Peter Pan' (2025) at the Gordon Craig Theatre – Stevenage, UK*

Naima received her BA in Theatre from the University of Maryland Honors College, where she was a Creative & Performing Arts Scholar. She is a vocal coach, continuing to train Traveling Players' students virtually, along with her private students. She has served as an assistant director to Caroline Clay at Duke Ellington School of the Arts and as a vocal coach and teaching assistant for Theatre, Dance, and Performance Studies at the University of Maryland.

An actor with a love for adventure, Naima has spent the past decade performing at theatres around the world. Some recent credits include Rachel Maron in *The Bodyguard Musical* (Theatre by the Sea) and Ursula in *The Little Mermaid* (Disney Cruise). Other recent credits include *The Color Purple* (National Tour), *Three Little Birds* (National Tour), *Jesus Christ Superstar* (Signature Theatre), *Avenue Q* (Constellation Theatre Company), *Caroline or Change* (Creative Cauldron), and *Hairspray* (Mill Mountain Theatre).



Naima is not the only Traveling Players alum whose classical theatre training helped them make waves in Musical Theatre. Fellow alum and Traveling Players Assistant Director Kai Thomani Tshikosi is currently playing Hercules Mulligan and James Madison in the National Tour of *Hamilton*.

Naima's performances of *MJ the Musical* will begin in September and continue through March 2026 at the Prince Edward Theatre in London.



*Naima (left, second row) at Traveling Players summer camp with the cast of 'Taming of the Shrew' (2021)*

### **About Traveling Players**

Recognized by the National Endowment for the Arts as one of 25 model “Summer Schools for the Arts,” Traveling Players is dedicated to training students in grades 2-12 in theatre. Now in its 23<sup>rd</sup> year, the company has grown from a summer camp of 18 students to a year-round theatrical community engaging 1000 students annually. Founded on belief in the imagination, wit, and honesty of teenagers, Traveling Players' programs help students find their voice through bold ensemble-based acting classes and theatre productions that emphasize connection and community.

Students interested in training with the company can take classes year-round at the Traveling Players Studio in Tysons Corner Center, including their day camp for grades 2-5. Over the summer, they also offer sleepaway camps and residential acting conservatories based in Virginia's Northern Neck, right on the Rappahannock River.

In 2020-21, Traveling Players received the ArtsFairfax Arts Education Award.

To find out more about Traveling Players Ensemble, visit <http://travelingplayers.org>.



*Naima in rehearsals for 'MJ the Musical'*

#####



# TPE Alums Shine on Stage and Beyond...

“Traveling Players is a recognized name, thanks to the combined half-decade of [TPE Alums].”

– TPE camper and staffer for twelve years (and counting) who now teaches theatre in Chicago.

## Ankita Raturi {Playwright & Teaching Artist}

Camper 2008 – 2009

College: Tisch School of the Arts (BFA Drama)

**Big News:** Ankita is a member of the New York Shakespeare Exchange’s Diversity Cohort. Her play *Our House is Haunted* was featured in the 2018 Corkscrew Theater Festival.

“TPE was the first time I took a classical form and made new work, the first time I devised theatre with a group of people, the first time I saw myself as a content creator as much as a performer. And that’s a lot of what I do now: devising and experimenting with form.”



## Sophia Hoffacker {Political Organizer}

Camper 2006 – 2008

College: University of Vermont (BS Environmental Studies)

**Big News:** “I just finished up a job as a Regional Field Director working to pass I-1631, a ballot initiative that would charge big polluters (like oil companies) for their pollution and invest the money in clean air and clean energy projects. It was written by the largest and most diverse coalition in state history, including tribal nations, environmental groups, communities of color, low-income advocates, small businesses, and labor. We lost by just a few percentage points, and now we are taking the fight to the state legislature!”

“TPE – and especially “Spiritual Moment” at Madeira – fostered a love for the environment in me that I carry with me to this day. It helped spark the work I do. I am passionate about social justice – it is impossible to do that work without a healthy imagination for what a better world could look like. TPE helped me develop my imagination, and without it I wouldn’t be able to do this work.”

## Ethan Carleton {Audio Engineer}

Camper 2005 – 2010, Staff 2011-2013

College: UNC Chapel Hill (BA in Dramatic Arts/Philosophy)

**Big News:** Ethan is head of the audio department at John W. Engeman Theater in Northpoint, NY

“I love to live-mix shows. Besides making sure everyone is heard when they’re supposed to be, I’m also constantly adjusting the audio balance between the actors and the band, which can play a crucial role in telling the story effectively. TPE had an ethos of equally valuing their tech staff as contributors to the production, which helped encourage me to explore technical theatre as a career option.”



# TPE Alums Shine on Stage and Beyond...

“Traveling Players is a recognized name, thanks to the combined half-decade of [TPE Alums].”

– TPE camper and staffer for twelve years (and counting) who now teaches theatre in Chicago.

## Amanda Fox {Educator}

Camper 2007 – 2010

“The thing I miss most about TPE is the community of people I worked with. The individuals I met and the interactions I had with them helped me come out of my shell. Before TPE, I was very shy and quiet around strangers, but TPE helped me realize

it is okay to be a little dramatic. After a few years in TPE, I was given my favorite role, Cacassena in *No Room at the Inn*. This role allowed me to exercise my freedom to improvise and play off my fellow troupe members.”



After graduating with a degree in psychology from Appalachian State University, Amanda joined Children's Hope Alliance as a youth counselor working with teenage trauma survivors. She is now planning to return to school for environmental studies.

Left: Amanda in *The Fake Madwoman*, 2010. Also pictured: Katie Myers



## Jenay McNeil {Actor}

Camper 2006, Staff 2015

“My favorite part of being an actor is the stories I get to hear, feel, and share...when my performance affects someone in a way that's personal, or when someone's story affects me in a way that makes me want to be a better person. It happens so often, and I feel lucky that it's my job to share these stories with as many people as I can.”

“TPE was my introduction to acting, the classics, and touring. I only spent one summer at TPE as a camper, but I always knew I would be back. That turned out to be eight-ish years later, when I assistant directed *Hamlet* with Jeanne. We took *Hamlet* wherever they would let us, whether it was a Jewish nursing home or a school for children where English wasn't their first language. That's when I realized, we are actors without borders. We know no boundaries, so why limit ourselves in any way? TPE taught me this and so much more.”



Above: Jenay performing Circle of Life with Disney Fantasy Cruises

Holding a BA in acting from the University of Maryland, Jenay is a New York-based actor, coach, and singer. She appeared recently in a new musical production of *Sleepy Hollow* at the New York New Works festival, and was a member of the Main Stage cast on board the Disney Fantasy cruise ship.



## Niko Duffy {Market Analyst}

Camper 2005 – 2007

"Doing theatre wasn't always accepted by my peers. TPE provided me with a safe space for my love of theatre to grow, as well as a place where I was with like-minded individuals for (sometimes) up to 48 hours in a row. I don't think I realized it at the time, but that really is rare, and I wish I'd appreciated it more at the time. TPE also taught me that there is nothing more important than a tent that keeps the rain out. Learn that, kids. Stay in school."

A graduate of Carleton College, Niko works in media marketing research and analytics for Publicis Media in San Francisco. "I think my favorite part about it is the pace. The digital advertising landscape is constantly shifting, so you have to constantly be educating yourself if you want to stay up to date. I'm also a huge fan of the feeling you get when, after pouring over loads of convoluted data, you can extract one meaningful insight that really does make a difference."



Above:  
Niko as a photographer  
during college  
Right: Niko as Harpagon  
in *The Miser*, 2005



## Noah Pilchen {Arts Administrator}

Camper 2007 – 2011, Staff 2012 – 2015

"I'm currently the Development Associate at the California Shakespeare Theater, specifically working to expand Cal Shakes' network of business and corporate partnerships. Traveling Players instilled in me a belief that these stories work best when performed outside. One of the reasons I love Cal Shakes is that they perform outside, in a beautiful amphitheater in the Siesta Valley, giving these epic stories the proper background they need."

"Part of my work involves helping non-arts organizations understand the importance of investing in the arts, for themselves, their clients, and their community as a whole. Traveling Players helped me see the connection between theatre and Silicon Valley. Silicon Valley success stories often involve risk taking, and good theatre is built on risk taking. Traveling Players knows how to create safe environments that get students out of their comfort zones, asking them to take risks: physically, emotionally, creatively."



Above: Noah in *Love's Labor's Lost*, 2010. Also pictured,  
L-R: (top) Patrick Smith, Molly Adler, Katie Baughman,  
(bottom) Naomi Miller, Garrett Jansen

Noah studied communications and business administration at Northeastern University. In his third year, he founded the Northeastern Shakespeare Society to increase the accessibility and availability of classical theatre on and off campus. He also created a 10-week Shakespeare course with fellow alum Amy Elfin at a Title I middle school in Dorchester, MA.



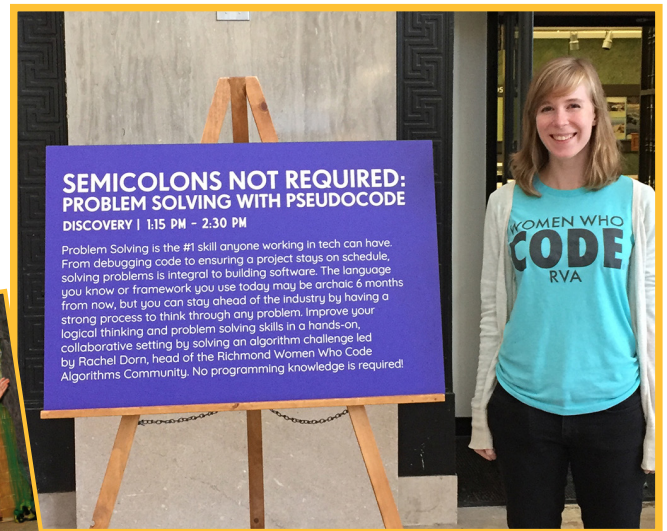


## Rachel Dorn {Software Developer}

Camper 2006, 2008 – 2009, Staff 2012, 2014

"I work as a software developer at a digital agency, mostly building websites. I also am very active with the Richmond branch of Women Who Code: I run a group that focuses on algorithms, and help to plan our network-wide events. Encouraging women in technology is a passion of mine, and I enjoy having the opportunity to teach and be a mentor to other female developers."

"I double-majored in film and economics at Vassar College. For my thesis, I wrote and directed a short film about a family's struggle to heal after a failed suicide attempt by the older daughter. The story is told from the younger daughter's perspective, which meant I spent a lot of time working with a child actress. Talking to a ten-year-old about suicide is not something you have to do every day; making this film taught me a lot about how to communicate with people and get them to understand your artistic vision in a way that resonates with them. Having worked with a number of professional directors at TPE was incredibly helpful as I figured out my own directorial style."



Left: Rachel as Duchess Seniora in *As You Like It*, 2008. Also pictured: Katie Wetstone

## Nick Nazmi {Artist}

Camper 2007

"I work as a video editor for the Museum of Modern Art (in New York). I love working on videos that show the public what happens in the museum [behind the scenes](#). The videos I mainly work on are in a documentary style. I learn a lot about paintings and other works of art in the museum by going through and editing the footage. It's exciting to help bring fascinating information about wonderful works of art to the public."

"TPE was a place where I really got to express myself through acting. Having that challenge alongside the company of wonderful friends, surrounded by nature, was an incredibly moving experience

that really shaped who I am today. I miss the hiking and performing in front of audiences. The rehearsals outside were always such a blast. It didn't feel like I was in the 21st century."

Above right:  
Nick's painting, *Passage*,  
oil on wood, 2017



Nick majored in studio art with a focus on painting and animation at Kenyon College. A painter, animator, and filmmaker, his work has been part of several group art shows, plus his solo show, *Persian Tales: the Tradition of Storytelling in Art* at Reis Studios.



# TPE Alums Shine on Stage and Beyond...

“I’m going around to college interviews and telling them I’m interested in Theatre and Environmental Science & Sustainability, with a possible future in Education. It’s like I’m majoring in TPE!”

After eleven years at TPE as a camper and staffer, Patrick Smith, graduated with a double major in Theatre and History at Muhlenberg College, where “Traveling Players is a recognizable name, thanks to the combined half-decade presence of [TPE alums]”

## Andrew Dahreddine {Actor}

Camper 2007 – 2008

If it weren’t for TPE, I would not be the actor I am today. TPE was the first place that I performed Shakespeare. Now, almost 10 years later, I’ve created a career with a heavy emphasis in Shakespeare performance, and have appeared in close to 20 full productions of the Bard.



Above: Andrew as Touchstone in *As You Like It*, 2008, with Hannah Johnston and Ariel Miller. Right: Andrew as Escalus in *Measure for Measure* at Bryant Park Presents Shakespeare.

[During] our tour of *Comedy of Errors* to schools in Alabama and Georgia, it seemed as if the students and faculties of these schools were grappling with problems, embarrassments, and confusions with both Shakespeare and the theatre at large. I feel that the heart of this problem is the lack of arts education at public schools in America. If people are not hooked on theatre at an early age, will they ever be?

Andrew holds a BFA in Acting from NYU’s Tisch School of the Arts. At NYU, he trained at the Stella Adler Studio of Acting, and spent a semester in London studying Shakespeare at the Royal Academy of Dramatic Art. He recently returned from a nine-month contract with the Alabama Shakespeare Festival, where he received his Actors’ Equity card. While an undergrad, he was the assistant to the director on *Henry V* at the Folger Shakespeare Library.

[www.andrewdahreddine.com](http://www.andrewdahreddine.com)



## Molly Adler {Fulbright Scholar}

Camper 2006, 2009 – 2010

At TPE, I learned a lot about pushing myself outside my comfort zone and taking risks. In 2015, I got a Fulbright scholarship to teach in Kolomna, Russia for nine months. I worked as a rotating lecturer on American culture, history, language, and literature. I also started a writing center and taught upper level students how to edit. I got to lecture at the Higher School of Economics. I made a lot of amazing friends and managed not to murder my students. I did teach them the word “defenestration” so they could understand my threats.

Molly is a first-year graduate student at the University of Texas–Austin in Russian, Eastern European and Eurasian Studies, and Global Policy Studies. She holds a BA in Russian and International Business plus a minor in Peace and Conflict Studies from Juniata College.



Above: Molly as Costard the Swain in *Love’s Labor’s Lost*, 2010.

## Robert Boyd {Nature Photographer/Videographer}

Camper 2005 – 2009

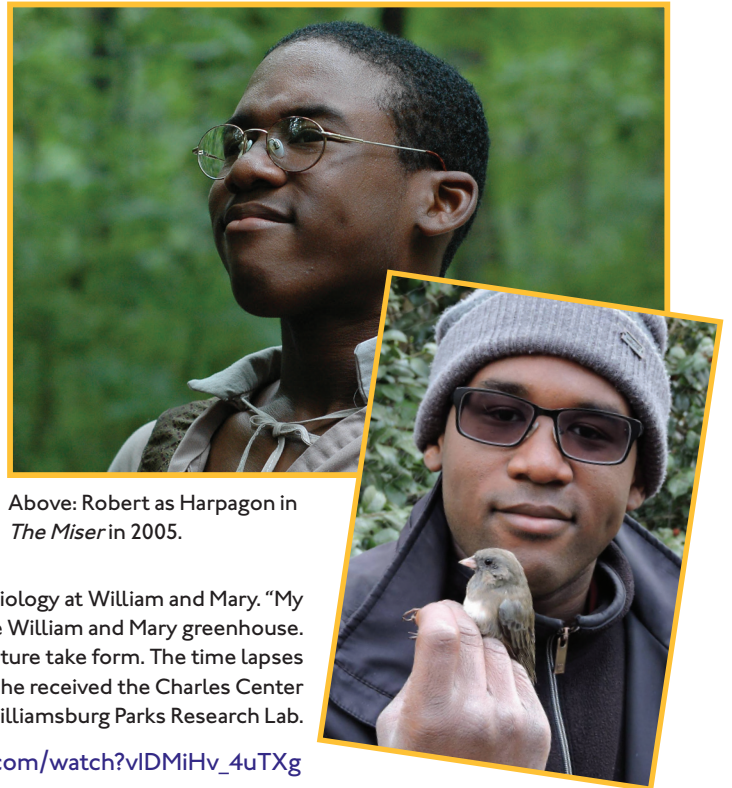
After college, I worked for the Department of the Interior, photographing invasive species. My favorite parts of the job were interacting with biologists and filmmakers, capturing invasive species' behavior with film, underwater film, microscopy, and time lapse photography, and learning to identify invasive plants. Suddenly I realized that most of the roadside plants I saw were invasive. It felt like an invasion!

I definitely miss spending time with other TPEers. Collecting jellyfish and empty wasp hives is much more fun when your friends are around to disapprove.

Thanks to Traveling Players, I feel comfortable knowing I can speak clearly and with resonance. I make sure to do my vocal exercises every time I have a speaking engagement, interview, or even an anxiety-inducing social outing. I'm currently working on a video series where I narrate my own nature films.

Robert majored in Film and Media Studies with a minor in Biology at William and Mary. "My favorite artistic experience was creating time lapses in the William and Mary greenhouse. Watching the flowers open on film was like watching a sculpture take form. The time lapses were featured in a William and Mary News special." In 2015, he received the Charles Center Research Scholarship to film animals and people for the Williamsburg Parks Research Lab.

[www.youtube.com/watch?vIDMiHv\\_4uTXg](http://www.youtube.com/watch?vIDMiHv_4uTXg)



Above: Robert as Harpagon in *The Miser* in 2005.

## Robin Irene Moss {Singer-Songwriter}

Camper 2004 – 2007, Staff 2010 – 2011

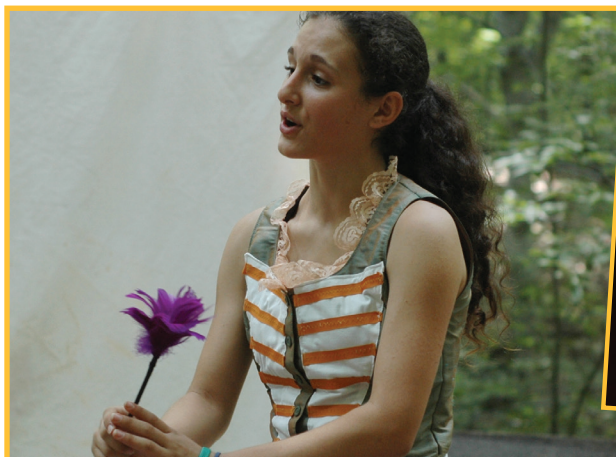
TPE's sense that art should be built around a loving community who will support one another and share the burdens along with the successes is a huge part of why I do what I do.

I made some friends at TPE that I continue to be very close with. I am so grateful for that. Both as a camper and a counselor, I felt buoyed by the presence of all of those amazingly talented and

warm-hearted people. It's always really exciting to reconnect with an old TPE friend I haven't seen in a long time.

I think I found my love of teaching at TPE. Teaching acting classes while assistant directing the High School Ensemble was so incredibly exciting to me. I definitely carried that away with me.

Robin Irene graduated from NYU's Tisch School of the Arts with a BFA in Drama. "My favorite thing is touring. I just love being able to go to a new place and create art and use that as a door into a new community of people or the culture of a city or country. My tours have consistently been the happiest, most fulfilling times of my life."



Robin Irene as Toinette in *The Imaginary Invalid*, 2005. She now performs nationally and internationally as a singer-songwriter.

[www.youtube.com/robinireneoriginals](http://www.youtube.com/robinireneoriginals)



# Katie Goldberg {Costume Designer & Illustrator}

Camper 2003 – 2007, Staff 2008 – 2009

TPE has really affected my perception of what it means to be a collaborator. I work very hard to keep the channels of communication open on multiple fronts. It's especially useful in fittings, when I need to be able to read the body language of the actor—sometimes there's much more to be gained by how someone looks at themselves in the mirror than from anything they actually tell you.

TPE's foundation in Commedia dell'Arte and Shakespeare has taught me how to look at a moment in the script and see twelve directions in which it could be pushed. Commedia-style storytelling is a defining force behind my ability to create characters using costumes.

Katie majored in Theatre & Performance Studies at the University of Chicago and then received an MFA in Costume Design from the University of North Carolina School of the Arts. "I love when the actor and the costume form the perfect union—when their character is informed by the costume choices and they can work together to tell the story. You can always tell in the fitting when the actor's face just lights up."

[www.katherinegoldberg.com](http://www.katherinegoldberg.com)

Right: Katie's thesis costume design for Arlecchino in *Cyrano de Bergerac* at UNCSA.



# Moshe Maizels {Music Teacher}

Camper 2003 – 2007, Staff 2008 – 2009

What I like most about my job is getting to know the kids that I work with, and helping them resolve conflicts with each other. I often think about how I felt as a child about school, and try to use that as a template to be an effective adult for the kids I work with.

My favorite artistic project I did in college was inspired by TPE. I directed a Commedia dell'Arte-style piece based on high school rather than traditional Commedia archetypes. As an ensemble we worked together to find the archetype that fit each actor the best, and then as I watched them improvise, I devised a plot for the cast with dialogue improvised every night. It ended up being a really well received show that had audiences laughing throughout.

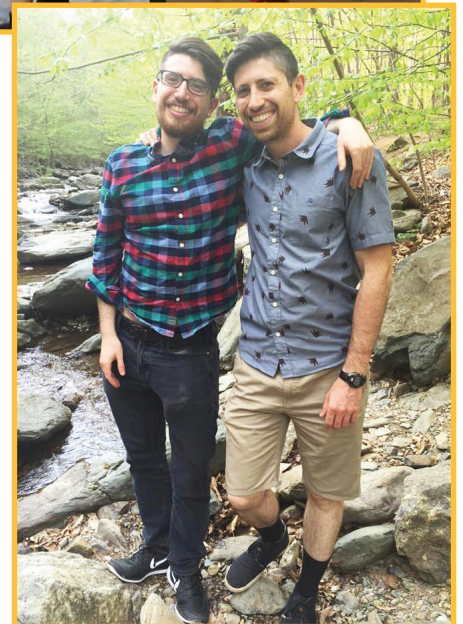
After graduating from Sarah Lawrence College with a concentration in Theatre, Moshe is pursuing a Masters in Music Education at Hunter College and working as a teaching assistant at VOICE charter school, where he assists with classes in Music, Choir, Art, Science, and Physical Education.

Above: Katie and Moshe as Martine and Sganarelle in *The Doctor in Spite of Himself*.

The two were Traveling Players originals, enrolling in the camp's first year, continuing as campers until they graduated from high school, and returning after graduation as counselors.

Also pictured: Lee Schellhammer.

Right: Moshe (L) with his brother Matt (TPE Staff 09).



# TPE Alums Shine on Stage and Beyond...

“I’m going around to college interviews and telling them I’m interested in Theatre and Environmental Science & Sustainability, with a possible future in Education. It’s like I’m majoring in TPE!”

After ten years as a TPE camper, Patrick Smith, pictured below with Kai, is pursuing a double major in theatre and history with a minor in music at Muhlenberg College, where “Traveling Players is a recognizable name, thanks to the combined half-decade presence of [TPE alums]”

## Kai Tshikosi {actor}

Camper 2006 – 2011, Counselor 2011

I’m in a traveling educational Shakespeare show that packs its set into a van and shows young thinkers that Shakespeare’s words aren’t above them in any way. TPE has a strong daily impact on my

life. I miss the campfires on tour, that feeling of going to bed with your ensemble and waking up with them the next day.



Kai graduated from Emerson College, where he received their **highest artistic scholarship** with a major in Theatre and a minor in Global-Postcolonial Studies. He is an actor, fight choreographer, and teacher in Boston.

Left: Kai (left) as Geronte in *Scapin* at Wolf Trap’s 2006 International Children’s Festival, pictured with Patrick Smith (see quote above). Above: Kai as Brutus in New Rep Theatre’s *Julius Caesar*.

## Emma Kemler {teacher}

Camper 2006 – 2011

Aside from constant grading, planning, and meditating, I motivate middle school students to advocate every day for themselves and their communities through oral and written expression. The inquisitive students keep me on my toes, and it’s humbling to watch their hard work and perseverance through the struggles of being a tween/teen in difficult urban conditions.

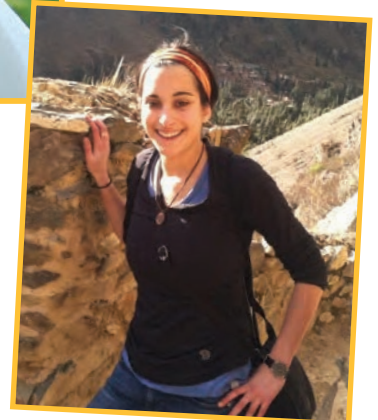
TPE instilled in me the values of teamwork, persistence, storytelling, creativity, passion for literature, etc. that I hope to instill in my students. I use my acting skills all the time in the classroom! Teaching is very performative, yet lessons are only effective if conveyed genuinely and authentically, just like actors connect with audiences.

I miss the late-night run-throughs, when all the moving parts began to coalesce into a cohesive show. The collective bond that developed between ensemble members in these times enabled performances to grow by leaps and bounds. The energetic high would stretch on into the nights during the campouts and crystallize into meaningful self and group realizations.



Emma in 2006. “My favorite role was definitely Ariel from *The Tempest*. It was a challenging role for me since the light, ephemeral movement type contrasted from my own, but how exciting to symbolize freedom!”

Emma graduated from Wesleyan University with a double major in Psychology and Hispanic Literatures & Cultures. She teaches middle school English in a teaching residency program for charter schools in New Haven, CT, as well as an after-school Spanish & Hispanic Heritage class.





## Molly Houlahan {director}

Camper 2005 - 2008

As an Assistant Director for Berkeley Rep's season, I enjoy working closely with the Artistic Director in the rehearsal room, observing the job firsthand, learning from him, and getting the enormous benefit of his mentorship. Getting both sides of the production-admin equation moves me towards my goal of running a theater company. Meeting directors from all over the country, I get to compare techniques and styles.

TPE taught me so much of what I know about theatre work. TPE's ensemble approach underlies my approach. When directing, I view my company of actors as a community that I must foster. I attempt to cultivate the same bonds, safety, and trust that I felt every day at TPE, where I learned that a great process means a great product.

I miss touring, traveling with the ensemble, living in tents together, performing in different places, talking and singing on the purple bus, and making banana boats by the fire.

Molly graduated with distinction from Yale as a double major in Theater and Film Studies. She is now Bret C. Harte Directing Fellow at Berkeley Repertory Theatre in California.



Molly as Beralde in *The Imaginary Invalid*, 2005. "For my thesis in Theater Studies I wrote and directed an original musical adapted from *The Paper Bag Princess*, a children's book." At Yale, Molly won the prestigious **Louis Sudler Prize for Excellence in the Creative or Performing Arts**.

## Caroline Record {media artist and technologist}

Camper 2005 - 2008, Counselor 2010

As a freelancer, I have done everything from teaching STEAM (Science, Tech, Engineering, Arts, Math) summer camps in Beijing to creating interactive media for a contemporary opera. I also collaborated with a computer scientist, composer, and dance company to create a performance called *The User Experience*. Using a giant heat-based screen as a backdrop for abstractly portraying the life of the designer, it re-imagined the user-machine interface as a mysterious bodily realm. Currently I'm making an interactive

exhibit for the bird hall at the Carnegie Natural History Museum. I am also a media artist, so there is always a show or two in the works.

I like how much I learn by working on a diverse set of projects, how creativity is crucial to each project. I like the freedom to choose what work I do and where - and the confidence I build by being a team of one.

Caroline as Elise in *The Miser*, 2005. "TPE helped me form a sense of well being and confidence as a person by demonstrating the power of grit and a positive attitude." Also pictured: Ethan Carleton and Cora Boyd.



With an MS in Human Computer Interaction and a BFA in Fine Arts from Carnegie Mellon, Caroline is a freelance technologist and artist in Pittsburgh.

## Adam Ashwell {chemist}

Camper 2006 – 2007, Counselor 2008

What I like most about research is that moment when everything comes together. It often takes months, but it's very rewarding. Traveling Players taught me how to work as part of a group, depending on others and being depended upon. The skills I learned come into play often in collaboration with other researchers.

Having majored in French and Chemistry at Colgate University, Adam is earning his PhD in theoretical chemistry at Northwestern University.



Adam (Right) with Moshe Maizels (Left). "I used my Commedia training at Colgate when I played Smee in *Peter Pan*." While not a theatre major, Adam was cast in mainstage shows in college.

## Sarah Stein-Lubrano {researcher and writer}

Camper 2005 – 2007, Counselor 2009 – 2010

The School of Life is a sort of think tank/start-up/social enterprise that teaches emotional intelligence as a part of everyday life. As researcher and writer, I design and write classes, write films and articles and other media, think about our underlying philosophy, chair panels, and meet with clients.

TPE gave me confidence as a teacher, networker, client-handler, and public speaker. In fact, I just chaired my first panel—acting taught me to think calmly on my feet and seem polished and interested. When a guy tried to shut my panel down, I was able to tell him nicely that we needed to let everyone speak. Afterwards, the festival organizer told me, "You CHAIRED that panel!"

At TPE, I felt part of a group that really cared about and valued me. It's a hard experience to recreate when you're older—nothing is ever quite the same. The adult world is less personal and less selfless and free. But TPE taught me what to look for in collaboration and friendship.

Sarah as Sister Francis in *Much Ado About Nothing*, 2005. "I miss cooking for everyone! I still love cooking for large groups."



Having received a degree in Social Studies from Harvard, and an MPhil in History & Philosophy from Cambridge University, Sarah works in England as a researcher and writer for The School of Life.





## Patrick Smith: Growing Up in the TPE Village

*"(During Patrick's first summer with TPE), he was given two roles in The Miser, one (with) no lines and the other (with) only a few. The director took the time to work with the non-speaking actors and turn their slapstick routine into a highlight of the show. Patrick's had small roles since, in middle school and high school productions, and has never complained; he just immediately pitches in and makes the role his own, as perfect a thing as it can be – and that gets noticed."*

Erica Smith, Patrick's mother



Patrick Smith first enrolled in Traveling Players in 2005, the summer after fifth grade – in those days, the youngest age possible. As the youngest in his ensemble, he was given a small part as The Commissioner in Moliere's *The Miser*. Several years later, his mother wrote the lines above, pleased that "very few lines" did not translate to "ignored by the director." Over the next few years, Patrick performed Moliere's *Scapin* and Carlo Gozzi's *The Love for Three Oranges* in Middle School Ensemble. Both were remounted at Wolf Trap's International Children's Festival.

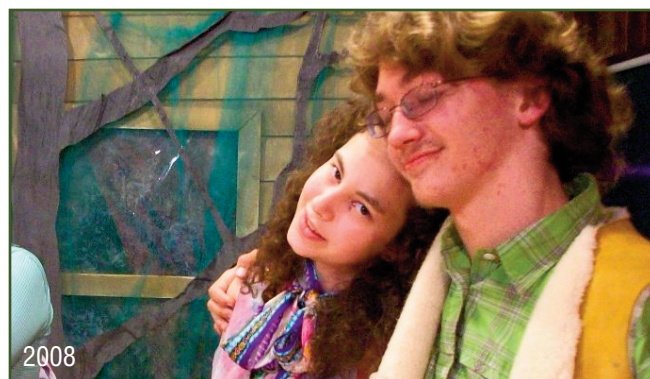
In 2008, Patrick graduated to High School Ensemble, playing the delightfully pathetic, shunned lover Silvius in *As You Like It*. And his training was beginning to pay off: he was one of two freshman to receive a major role in the spring musical at his high school. In 2009, he was accepted into Traveling Troupe, where he would perform for the next three years, as Malcolm in *Macbeth*, Dumaine in *Love's Labor's Lost*, and Romeo in *Romeo & Juliet*. Always charismatic on stage, he was blossoming into a truly remarkable performer.

By the time Patrick graduated high school, he had set a record: first to spend seven years as a TPE camper. Patrick then returned to TPE as a staff member, working in the scene shop and as assistant director for Judy White's new Greek

Myths Ensemble, from 2012 to 2014. Integral to both, he's been Judy's right hand man, even composing and performing the music for her original productions. Today, Patrick's campers are the same age he was when he first arrived at Traveling Players, and he has embodied our legacy by providing the same care, kindness, and focused, individualized attention that he received as a child. Last summer, when some of the youngest campers parodied one of his songs, Patrick considered their embellishment the highest form of praise.

Patrick received a Presidential scholarship and a Theatre Talent Award (totaling \$14,500 per year) to attend Muhlenberg College's prestigious theatre program in Allentown, PA, along with several other TPE alums. As in high school, he was cast in a major role during his first year – unusual for a freshman. He is now studying Commedia dell'Arte at the Accademia dell'Arte in Arezzo, Italy on a semester abroad.

So far, Patrick has been with Traveling Players for ten years, longer than anyone else (other than Jeanne), and we look forward to cheering him on in his career and life. As Patrick's story demonstrates, the longer you participate in the TPE village, the more valuable your experience. He recently wrote to us: "THANK YOU for 10 amazing years, on many sides of the multifaceted gem that is this community."







## GREAT THEATRE IN THE GREAT OUTDOORS



**LEFT PAGE:** Top left, Patrick's first role in *The Miser*, Middle School Ensemble, 2005 • Top middle, Patrick winning his first Ensemble Award in 2006 • Top right, *Scapin* at Wolf Trap's International Children's Festival, Middle School Ensemble, 2006 (with Kai Tshikosi) • Bottom left, *The Love for Three Oranges* at Wolf Trap, Middle School Ensemble, 2007 • Bottom right, *As You Like It* at Shenandoah National Park, High School Ensemble, 2008 (with Kara Miller)

**RIGHT PAGE:** Top, *Romeo & Juliet* at the Lime Kiln amphitheater, Traveling Troupe, 2011 (with Ellie Robb) • Middle left, On tour in Colonial Williamsburg for *Love's Labor's Lost*, Traveling Troupe, 2010 • Middle right, With the Six Meters contact improv group at Muhlenberg College, 2014 • Bottom right, Music rehearsal for *Perseus and the Rock Star*, Greek Myths Ensemble, 2014

